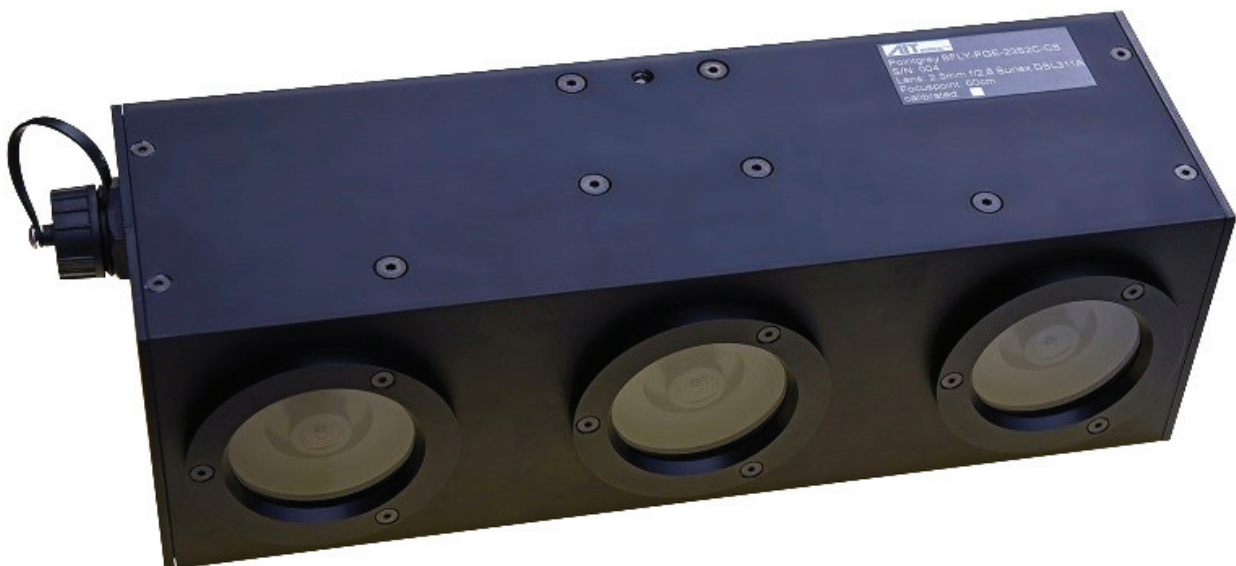


3D CAMERA

TECHNOLOGY

3D Image processing can help in complex scenarios where 2D is not sufficient. AIT's passive stereo network camera is the basis for a broad range of applications in the security domain such as access control, person separation, counting and queue length estimation. The camera accommodates 3 IP sensors, an industrial Ethernet hub and a Power-over-Ethernet interface. The camera is available with various baselines and several configurations for near and far operation. The included sensors are mounted on a massive optical bank for precise operation.



3D Camera

TECHNICAL SPECIFICATION

Temperature range	0° to +45°C
Distance between camera and persons	at least 0,5m
Locking mechanism	tripod socket 1/4" or two M5 internal screw threads
Illumination	sufficient ambient illumination (prevent changing illuminations e.g. direct sunlight)
Surface	non-reflecting ground
Weight	2 Kg
Housing material	aluminum enclosure
Enclosure rating	IP64 (acc. EN60529)
Field of view	90° x 60° (optics can be customized)
Available Software	Stereo Matching and Depth Calculation, Person Detection, Person Separation, Left Object Detection, Queue-Length Estimation
Enclosure size (near operation)	90mm x 97mm x 300mm
Enclosure size (far operation)	90mm x 97mm x 500mm
Live image	Color images (from center camera)
EMC	EN-61000 EN-55022 Class B CE
Connection	RJ-45 Gigabit-Ethernet POE+/802.3af (12.5W)

CONTACT

AIT Austrian Institute of Technology
Digital Safety & Security Department
Donau-City-Straße 1, 1220 Wien | Austria

DI BERNHARD STROBL

Visual Surveillance and Insight
Phone: +43(0) 50550 - 4290
Fax: +43(0) 50550 - 4170
E-mail: bernhard.strobl@ait.ac.at
Web: www.ait.ac.at/icn